

Ocean Park Traffic Calming – site identification



“It is about Speed not Volume”

Presented to Surrey Council Mon. Nov. 15th 2004

Ocean Park Area Livability Study

Four issues relating to Traffic Calming and Community Theme

- 1. A Sense of Safety**
- 2. Traffic Calming**
- 3. Locations for New or Improved Sidewalks**
- 4. Theme Considerations – The “Village Concept”**

This Study is not about traffic volume, so much as control of “over the speed limit” traffic flow, in other words “traffic calming”.

OPCA is encouraged by this

THE PROVINCE · Tuesday, October 5, 2004 **A19**

Speed bumps coming to Surrey

By Kent Spencer
Staff Reporter

Surrey plans to spend \$2 million on speed bumps and other traffic-calming devices to cut the “carnage” on city streets.

rules relating to traffic calming to increase the number of roads that will qualify for raised intersections and traffic circles.

Under the previous rules, 50 per cent of drivers needed to

take 18 months, but staff say it will now be done in three.

Mayor Doug McCallum told council that paying for the measures will be no problem. Final approval is expected in



OCEAN PARK COMMUNITY ASSOCIATION
serving the community since 1925

128th St. between 23rd and 25th Avenues

Three pupils hit since Jan. 2003

OPCA is “alarmed” at this

SAFETY / *Three pupils here hit by cars since January 2003*

Sept 25/04

Drivers slowed by blitz

Carrying signs saying “Slow Down,” kids joined

Marisa
BABIC
Staff Reporter

Bunn says she hopes the safety blitz will encourage motorists to slow down.

“I don’t think this is

but it may be a reminder to people that we care as parents and as a community, and that we’ll keep having blitzes,” she said.

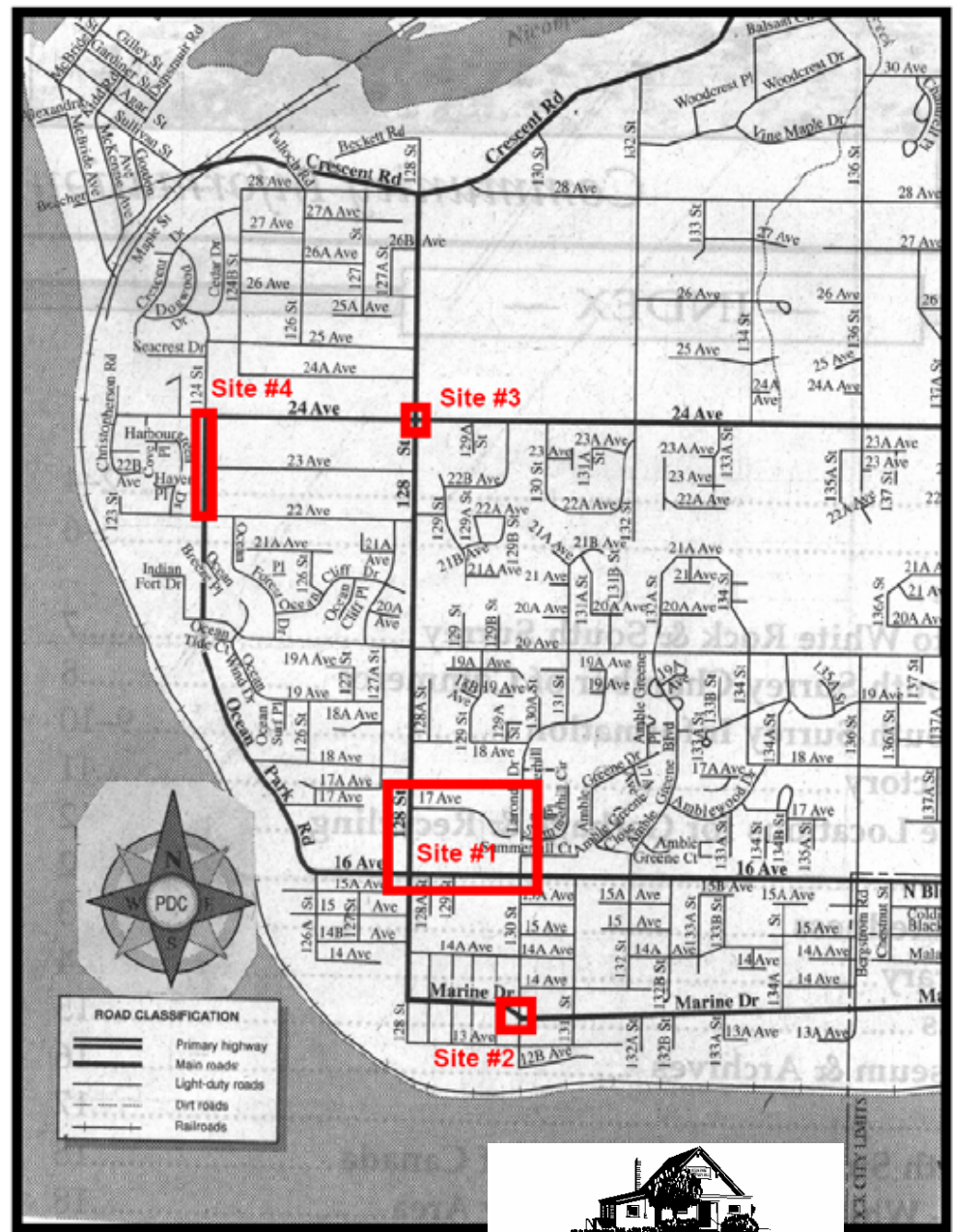


OCEAN PARK COMMUNITY ASSOCIATION
-serving the community since 1925

Map of the Ocean Park area with the four sites identified...

- Site #1 – Intersections at 128th St. & 16th Ave.
- Site #2 – Intersection at 130th & Marine Dr.
- Site #3 – Intersection at 128th St. & 24th Ave.
- Site #4 – Intersection at 124th St. & 24th Ave.

The following is some detail on these sites



Site #1 – Intersection at 128th St. & 16th Ave. “The Village”

3 of the 6 sites noted in this area are reviewed today



The “east entrance” 16th Ave. at 130th St.

At this point some form of physical “slow-down” alert is needed



It could be this kind of application



The “Hub” 16th Ave. & 128th St.

This intersection needs some form of major re-design



Traffic Circle @ 136th St. and 62nd Ave. possible?



The “North entrance” 128th St. & 17th Ave.

At this point some form of physical “slow-down” alert is needed

This kind of application could be considered



Theme Considerations Ocean Park

- **Village Theme:** striking identification of the “Village” at appropriate points before the crosswalks at 16th Ave. at 130th St. and 17th Ave. and 128th St. (two points of many possibilities)
- **Community “Border” Definition:** There are several of these “Border” signs posted to define “Communities” in the Surrey Family

Theme Considerations the “Village Concept” (an OPALS issue)

“Entry” sign at 136th St,
and 16th Ave.



Theme would be enhanced with this
signage “Ocean Park”



Site #2 Intersection – 130th St. and Marine Drive



Blind corner Marine Drive & 130th St.

**The blind corner
and poor crosswalk
configuration**



**This kind of application
could be considered**



Site #3: 128th St. & 24th Ave.



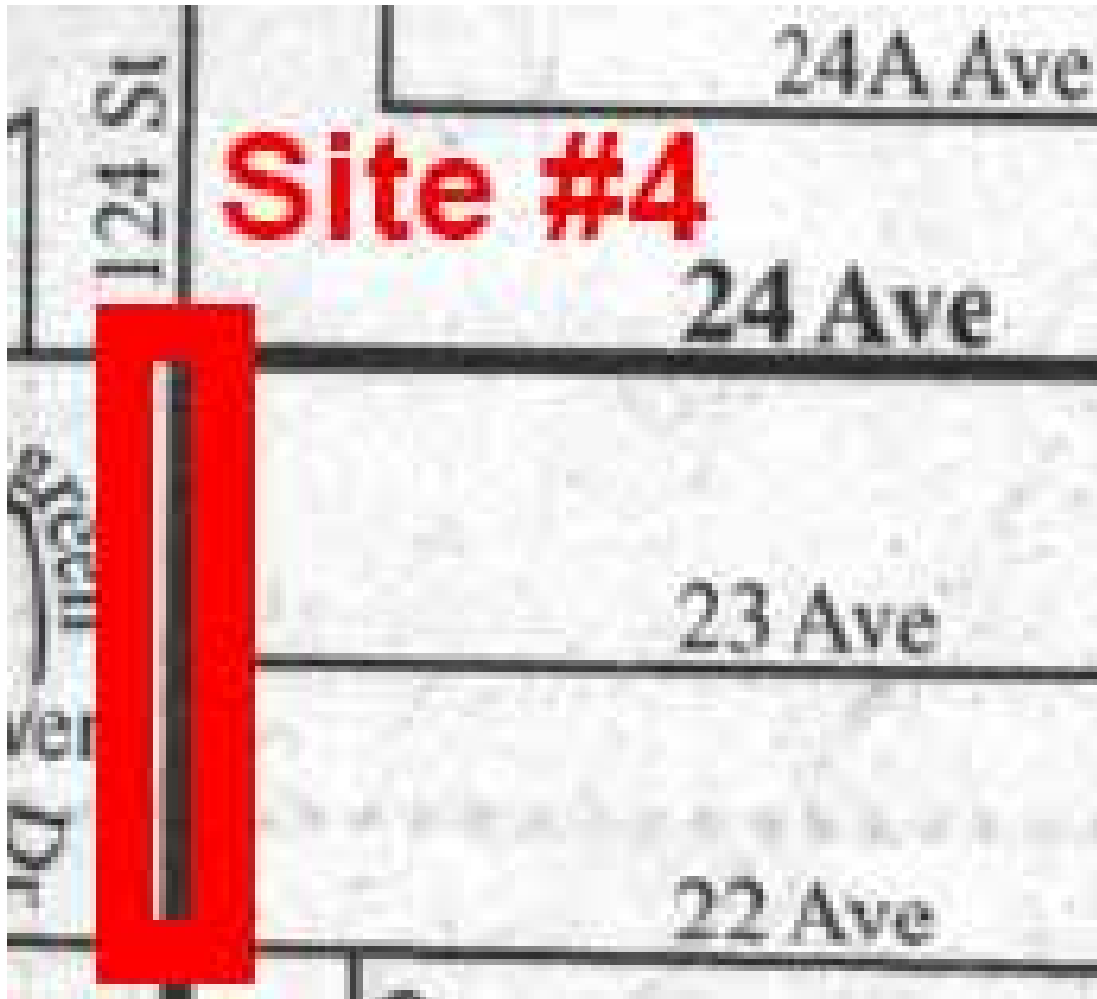
Site #3: 128th St. & 24th Ave.

**Some form of physical
“slow-down” & right
hand turn needed**

**This application is at
128th St. & 20th Ave.**



Site #4: 124th St. & 24th Ave.



Site #4: 124th St. & 22nd Ave.

No sidewalks no curb extension at Crescent Park Annex



Similar school site Surrey Central Elementary





It is hoped that Mayor and Council will make a motion to receive this report and to consider the Ocean Park area as one of the first priorities for new Traffic Calming Planning and Budgeting.

Thank You and Any Questions?

